

ZigBee network repeater



EREPEATER

Quick Guide



Ver. 6.1

Release date: X 2024

Soft: v1.0.0



Producer:
ENGO Controls sp. z o.o. sp. k.
4 Rolna St.
43-262 Kobieliце
Poland

www.engocontrols.com

INTRODUCTION:

Repeater increases wireless network signal range for all Engo devices which works over ZigBee 3.0 protocol. It helps to improve radio signal range in places, where wireless network is disturbed by distance or other obstacles (concrete walls, reinforced ceilings, etc.). This device cannot operate standalone. In order to use it EGATEZB ZigBee 3.0 gateway is needed.



WARNING:

This product must be used with EGATEZB ZigBee 3.0 gateway (purchased separately).

PRODUCT COMPLIANCE:

This product complies with the following EU Directives:
2014/30/EU, 2014/35/EU, 2014/53/EU, 2011/65/EU.

SAFETY INFORMATION:

Use in accordance with national and EU regulations. Use the device only as intended, keeping it in a dry condition. The product is for indoor use only. Please read the entire manual, before installation or use.



WARNING:

For the entire installation, there may be additional protection requirements, which the installer is responsible for.

Technical specification:

Power supply	230V AC 50Hz
Communication	ZigBee 3.0 2,4GHz
Dimensions [mm]	40 x 24 x 82

LED diode indications

	EXPLANATION
LED diode flashes blue	The device is in pairing mode with ZigBee network (when device didn't previously added to the ZigBee 3.0 network, or after recovery factory reset)
LED diode lights up blue	The device has been added to the ZigBee 3.0 network
LED diode is off	Repeater is not connected to power supply 230V

Installation of the repeater in the app

Make sure your router is within range of your smartphone. Make sure you are connected to the Internet. This will reduce the pairing time of the device.

STEP 1 - DOWNLOAD ENGO SMART APP

Download the ENGO Smart app from Google Play or Apple App Store and install it on your smartphone.



Powered By

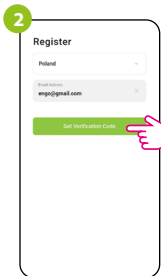


STEP 2 - REGISTER THE NEW ACCOUNT

To register a new account, please follow the steps below:



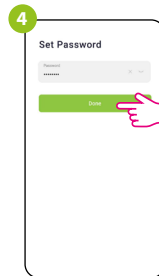
To register a new account, please follow the steps below:



Then set the login password.



Enter the verification code received in the email. Remember that you only have 60 seconds to enter the code!



Enter your e-mail address to which the verification code will be sent.

STEP 3 - INSTALLATION OF THE ZigBee 3.0 REPEATER IN THE APP

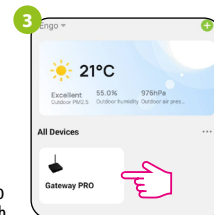
After installing the app and creating an account:



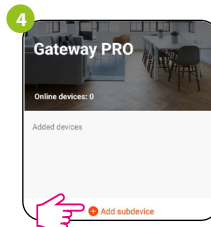
Make sure you have added ZigBee gateway to app.



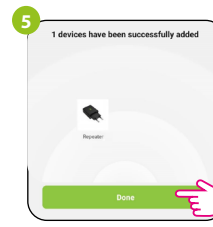
Make sure the repeater is connected to power supply. The blue LED should flash. If not, perform factory reset (check „Factory reset“ section).



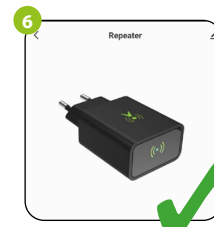
Enter the gateway interface.



In „Zigbee devices list“ go „Add devices“.



Wait until the application finds the device and click "Done".



The repeater is installed. Blue LED diode is steady and app shows main interface.

Factory Reset (entering the pairing mode)

Unplug and plug again the repeater three times at intervals of 3 seconds. The LED on the device will flash, which means repeater has been removed from the ZigBee network and gateway. After that repeater will enter pairing mode automatically. You can add it back to the ZigBee network (check „STEP 3“ section).

