



Quick Guide

Ver. 1.1
Release date: X 2024
Soft: V2.90.794



Producer:
Engo Controls sp. z o.o. sp. k.
Rolna 4 St.
43-262 KobieliŃce
Poland

www.engocontrols.com

Technical specification

Power supply	230V AC
Communication	Wi-Fi 2.4GHz
Lumen	2500 - 3000lm
Resolution	4Mpx 2560*1440P
Local storage	Micro SD(Max 256GB)- card not included Minimum requirements of a microSDXC card -full HD speed class - C10/U1/V10
IP protection class	IP65
Dimension [mm]	283 x 133 x 184

Product Compliance

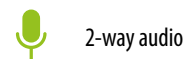
This product complies with the following EU Directives:
2014/53/EU, 2011/65/EU.

Introduction

The outdoor camera offers Full HD 4MP resolution and a wide 108° viewing angle. The built-in LED lamp with adjustable brightness effectively illuminates the monitored area. Thanks to the motion detection function, the camera reacts to any unwanted movements. The device has two-way audio communication with noise reduction. The camera is equipped with a memory card slot with a capacity of up to 256GB. The camera is suitable for a wide temperature range, from -10°C to +50°C, making it suitable for all conditions. In addition, thanks to the push notification function, users can receive instant alerts via the Engo Smart app.

Product features

FHD 4Mpx 2560*1440P



2-way audio



Motion detection



Angle of lance 108°



Move tracking

Safety Information:

Use in accordance with national and EU regulations. Use the device only as intended. Installation must be carried out by a qualified person in accordance with national and EU regulations.

Installation:

Installation must be performed by a qualified person with appropriate electrical qualifications, in accordance with the standards and regulations in force in a given country and in the EU. The manufacturer is not responsible for non-compliance with the instructions.



WARNING:

For the entire installation, there may be additional protection requirements, which the installer is responsible for (e.g., installation of an additional differential pressure overflow valve).

Camera description



1. LED lamps
2. Light sensor
3. Camera lens
4. Microphone
5. Loudspeaker
6. Moisture protection
7. Reset button
8. Micro SD slot

Installation of the camera in the app

Make sure your router is within range of your smartphone. Make sure you are connected to the Internet. This will reduce the pairing time of the device.

STEP1 - DOWNLAD ENGO SMART APP

Download the ENGO Smart app from Google Play or Apple App Store and install it on your smartphone.

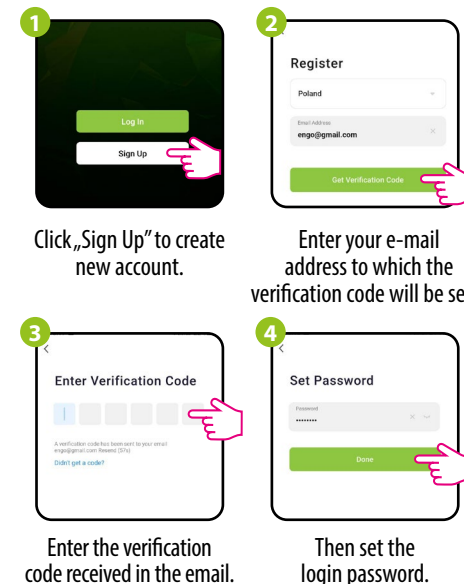


Powered By



STEP 2 - REGISTER THE NEW ACCOUNT

To register a new account, please follow the steps below:

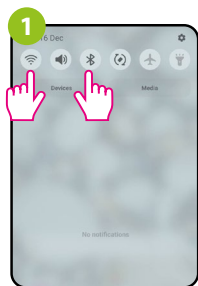


Enter the verification code received in the email.

Then set the login password.

STEP 3A - CONNECT CAMERA TO WI-FI- Connection via Bluetooth

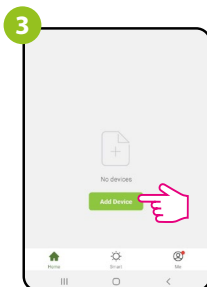
After installing the app and creating an account:



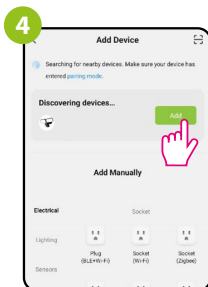
On your mobile device, make sure the ENGO Smart has access to permissions (Location, Bluetooth, Nearby devices). Then turn on Bluetooth and Location. Connect to 2.4GHz Wi-Fi network to which you want to assign the device.



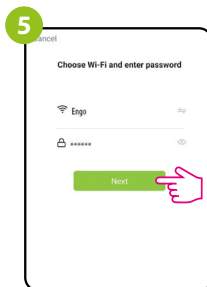
Make sure the camera is powered on. Then press and hold the button on the back of the camera for approximately 5 seconds, until the beep. The blue LED on the front of the unit will then start flashing. The pairing mode is enabled.



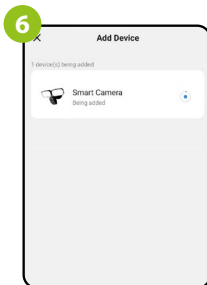
In the app, select: „Add Device“.



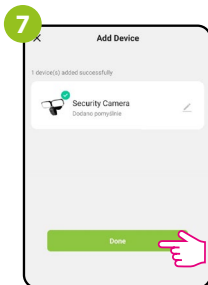
After finding the camera, go „Add“



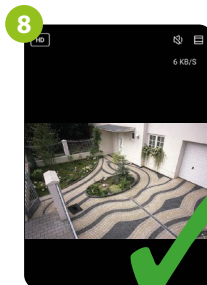
Select the Wi-Fi network in which the camera will operate and enter the password of this network.



Wait for the app to configure the device with the selected Wi-Fi network.



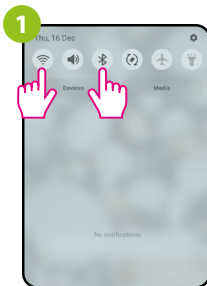
Go „DONE“.



The camera has been installed and displays the main interface.

STEP 3B - CONNECT CAMERA TO WI-FI- Connection via QR Code

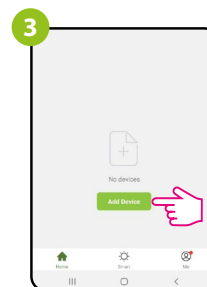
After installing the app and creating an account:



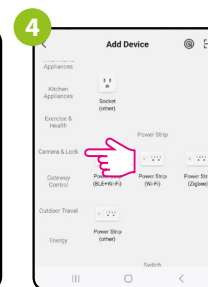
On your mobile device, make sure the ENGO Smart has access to permissions (Location, Bluetooth, Nearby devices). Then turn on Bluetooth and Location. Connect to 2.4GHz Wi-Fi network to which you want to assign the device.



Make sure the camera is powered on. Then press and hold the button on the back of the unit will then start flashing. The pairing mode is enabled.



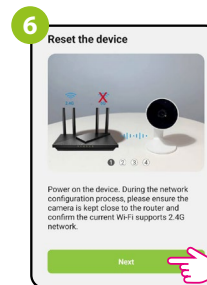
In the app, select: „Add Device“.



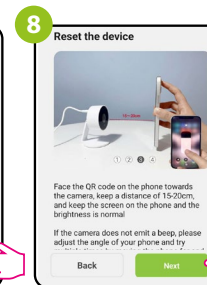
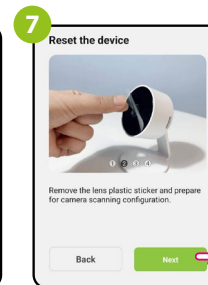
Select „Camera & Lock“.



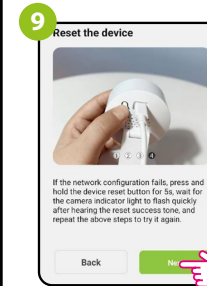
Find and click on the Wi-Fi camera in the device list.



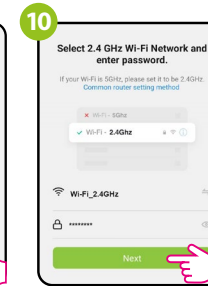
Follow the instructions displayed on the smartphone screen.



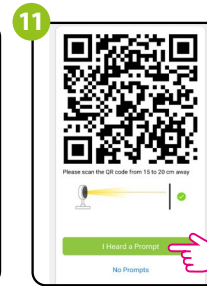
STEP 3B - CONNECT CAMERA TO WI-FI- Connection via QR Code



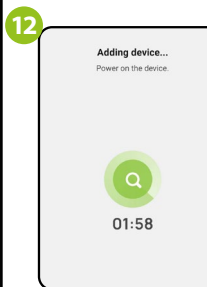
Then go „Next“.



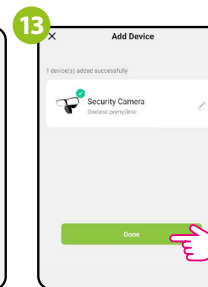
Select the Wi-Fi network in which the camera will operate and enter the password of this network.



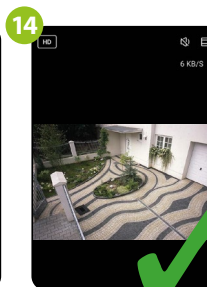
Point the camera at the QR code displayed in the app, click „I heard the sound“ after the beep.



Wait for the app to configure the device with the selected Wi-Fi network.



Go „DONE“.



The camera has been installed and displays the main interface.

Factory reset

To restore the default settings of the camera, hold down the Reset button for about 5 seconds until a beep sounds. Then release the button. The camera will restart, restore the default (factory) settings and be ready to be added to the application again.

